



System Planner

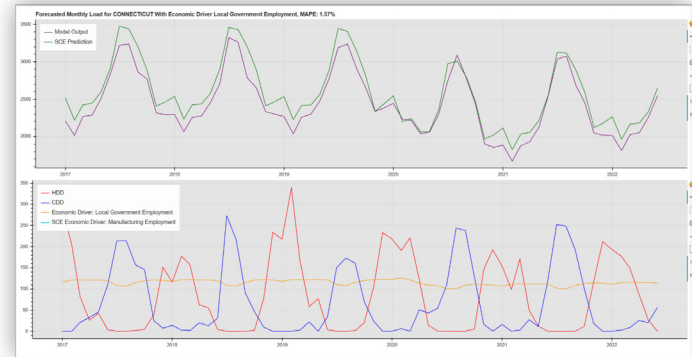
Load and DER Forecasting

Customer Case Study

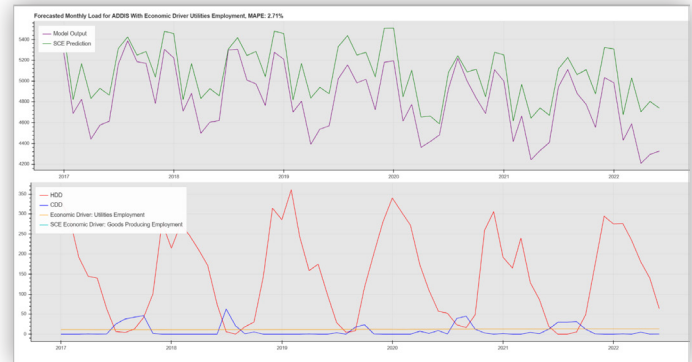
Modeling on 2016-2019 and testing on 2020, SCE compared the 2021 Itron forecasts with the actuals to derive an efficacy approximation.

Overall, there was an average improvement of **37.86%**.

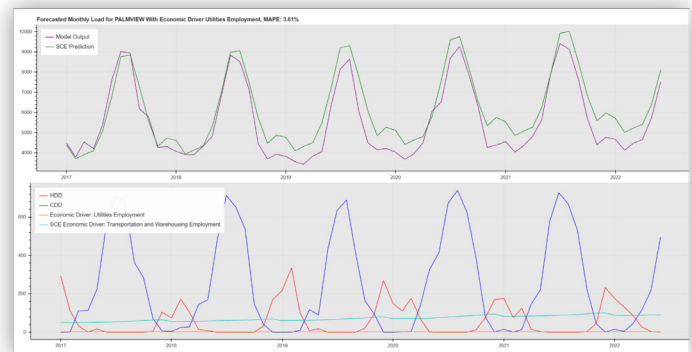
CIRCUIT	SCE METHOD MAPE	PILOT METHOD MAPE
Circuit #1	22.38%	2.32%
Circuit #2	201.35%	60.22%
Circuit #3	27.73%	30.06%
Circuit #4	19.62%	16.49%
Circuit #5	12.64%	16.79%
Circuit #6	230.06%	16.75%



FORECASTED MONTHLY LOAD: **CIRCUIT #1**



FORECASTED MONTHLY LOAD: **CIRCUIT #2**



FORECASTED MONTHLY LOAD: **CIRCUIT #3**