



Flow straighteners

Flow straighteners are designed to avoid the negative effects that flow disturbance might generate on metering. Mainly to be installed directly upstream of horizontal Woltmann meters, they refurbish the flow vane potentially disturbed by elements such as valves, filters, elbows, pumps ...

Accurate metering is then secured despite the upstream condition.

Two straightener types exist. Types apply for the requested sizes:
S-3D type for sizes from DN50 to DN200
RJ-1 type for sizes from DN250 to DN500

FEATURES AND BENEFITS

- » Specific design to break flow turbulences
- » Compact design resulting in shorter length needed for installation

S-3D description

S-3D combines the effects of both increase/ decrease in flow vane diameter and ribs placed in the flow direction to break turbulences.

Due to its compact design, S-3D only requires 3 times its diameter for installation.

RJ-1 description

RJ-1 is made of triangular channels guiding the flow, limiting the impact of turbulences.

All lengths of RJ-1 require 500 mm of installation space.

Installation requirements

- » S-3D can be installed in any direction.
- » RJ-1 should be installed following the flow direction indicated on the body.

Variants

Special drilling and high pressure RJ-1 version (40 bars) available upon request from sizes 150 to 300 mm (cast iron PN 25 or 40).



S-3D

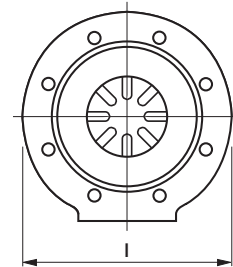
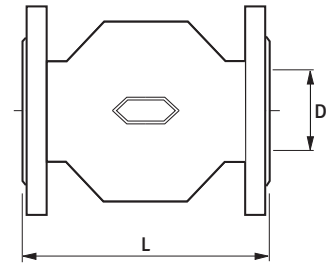
TECHNICAL SPECIFICATIONS

S-3D Version

Nominal diameter (DN)	mm	50	65	80	100	150	200
	Inches	2"	2½"	3"	4"	6"	8"
End connection (Flange)		PN 10/16				PN 10 or 16	
Length (L)	mm	150	195	240	300	450	600
Width (I)	mm	165	185	200	222	323	427
Weight	Kg	7.5	10.5	13.5	22	51	89
Maximum pressure	bar	20					

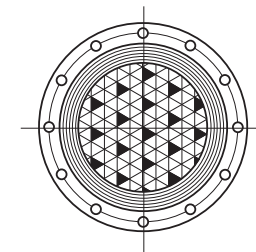
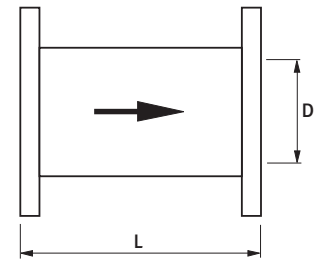
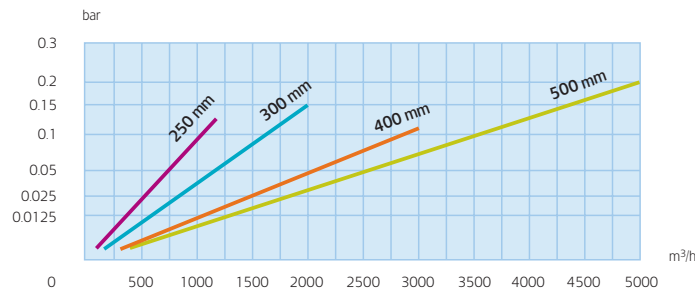
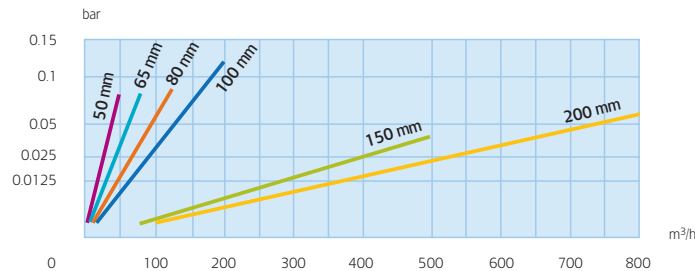
RJ-1 Version

Nominal diameter (DN)	mm	250	300	400	500
	Inches	10"	12"	16"	20"
End connection (Flange)		PN 10 or 16			
Length (L)	mm	500			
Weight	Kg	81	97	160	221
Maximum pressure	bar	20			



S-3D dimensions

HEAD LOSS



RJ-1 dimensions



Our company is the world's leading provider of smart metering, data collection and utility software systems, with over 8,000 utilities worldwide relying on our technology to optimize the delivery and use of energy and water.

To realize your smarter energy and water future, start here: www.itron.com

For more information, contact your local sales representative or agency:

ITRON WATER METERING

9, rue Ampère
71031 Mâcon cedex
France

Phone: +33 3 85 29 39 00

Fax: +33 3 85 29 38 58